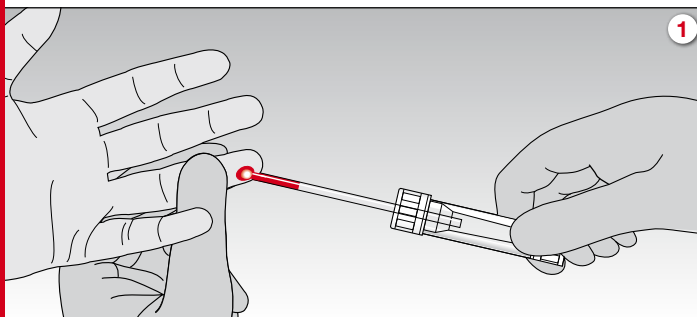
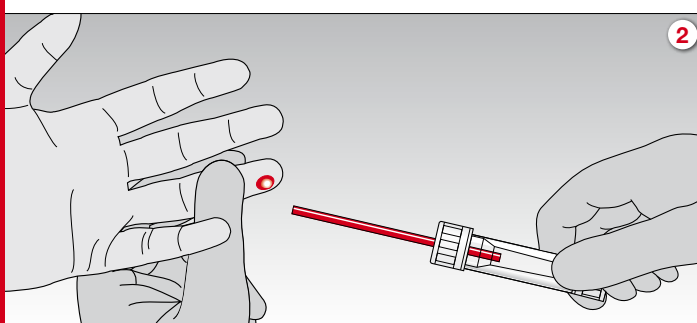


Microvette® 100/200

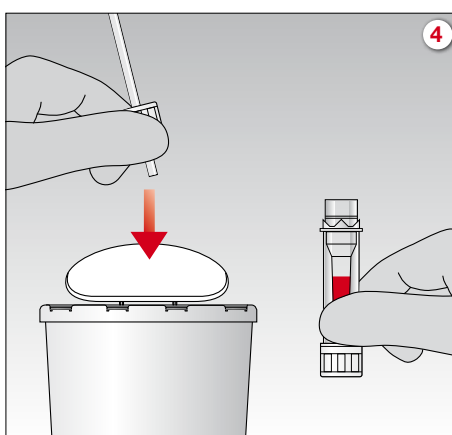
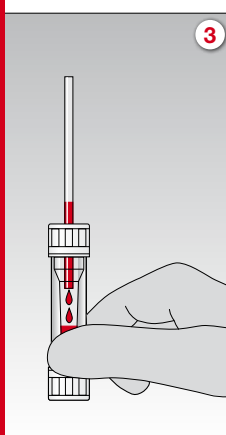
User Guide



1. Collect blood with the assembled End-to-End 100 µl or 200 µl capillary. For collection, best results are achieved if the Microvette® is held in horizontal or slightly inclined position.

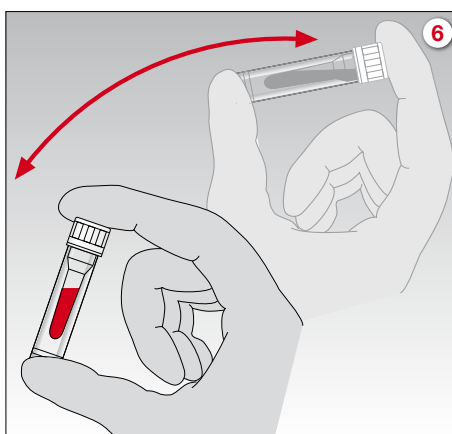
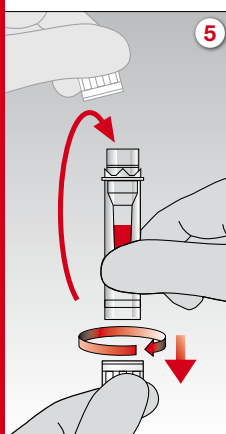


2. Collection is complete when the End-to-End capillary is entirely filled with blood.



3. Hold the tube upright to allow the blood to flow from the capillary into the Microvette®.

4. Turn the cap to remove and discard the preassembled capillary as one unit.



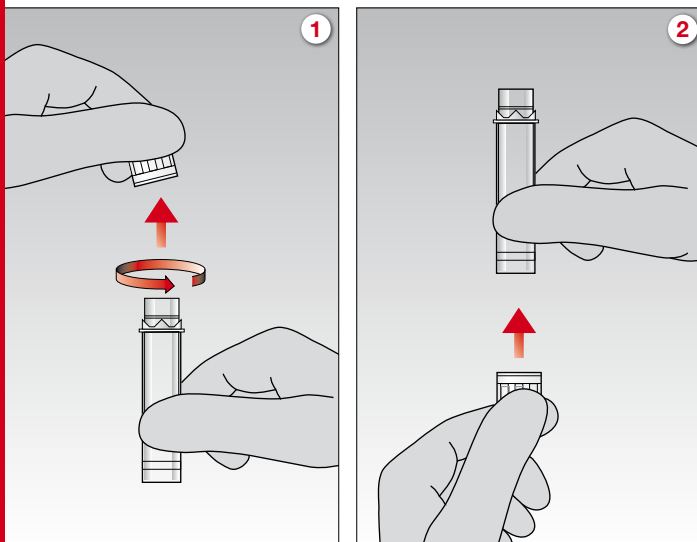
5. Remove the cap from the base and seal the Microvette® ('click' position).
6. Mix sample thoroughly by inverting the Microvette®.

All patient blood specimens should be treated with standard precautions.

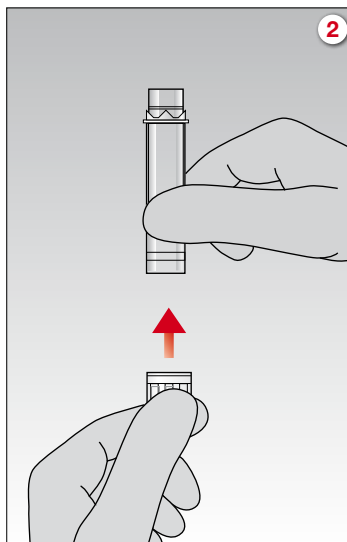
Wear gloves!

Microvette® 300/500

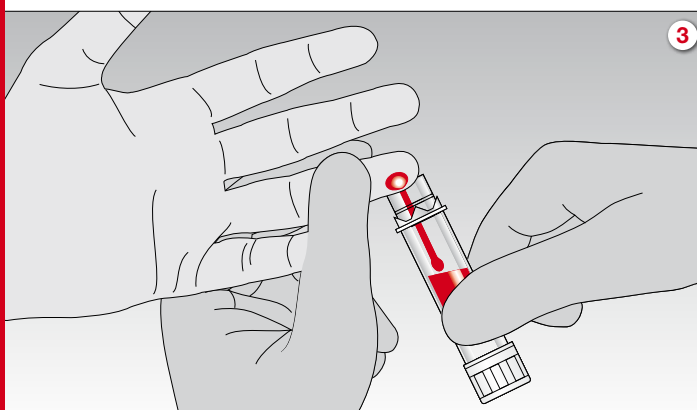
User Guide



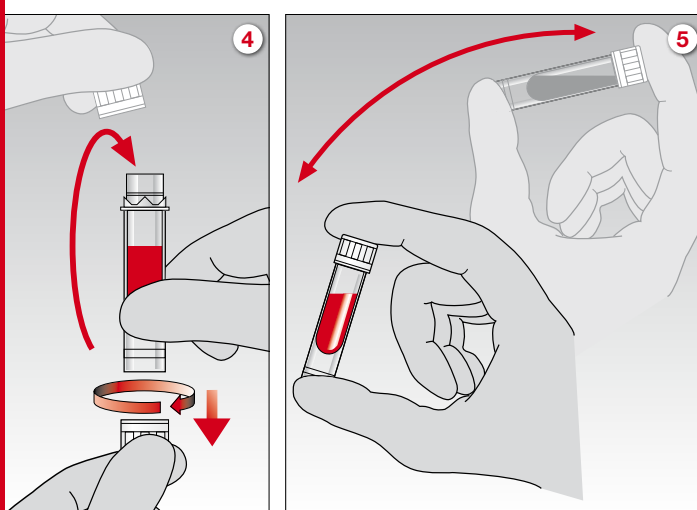
1. Turn the cap to remove it from the Microvette®.



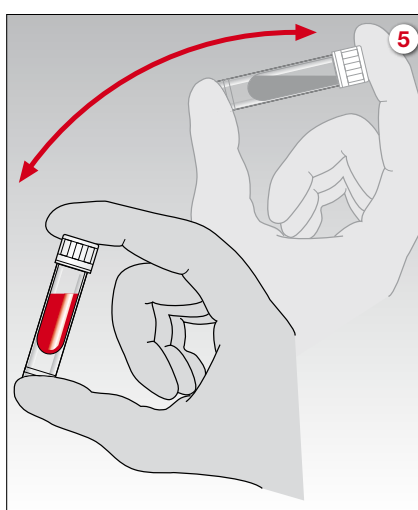
2. Attach the cap to the base of the Microvette®.



3. Collect blood by gravity-flow using any part of the collection rim.



4. Remove the cap from the base and seal the Microvette® ('click' position).



5. Mix sample thoroughly by inverting the Microvette®.

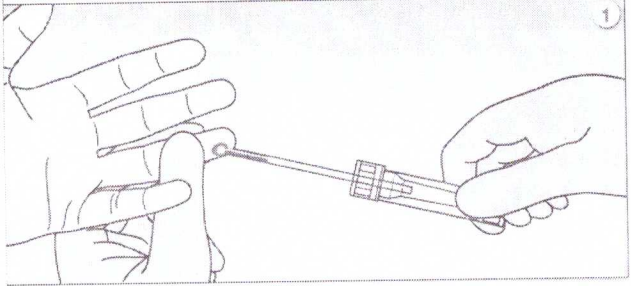
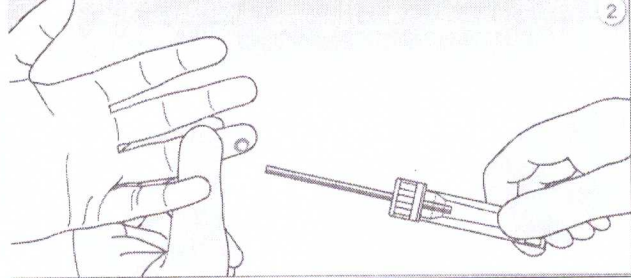
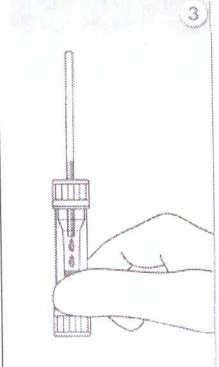
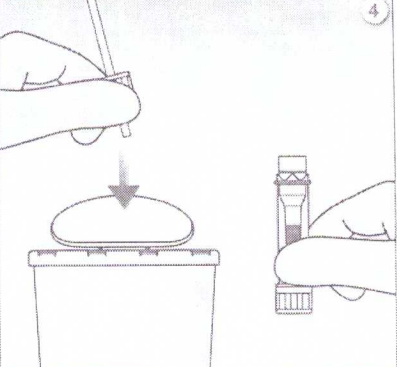
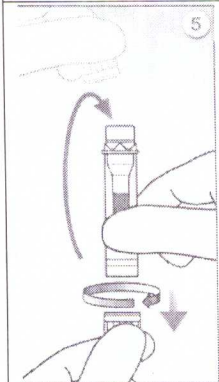
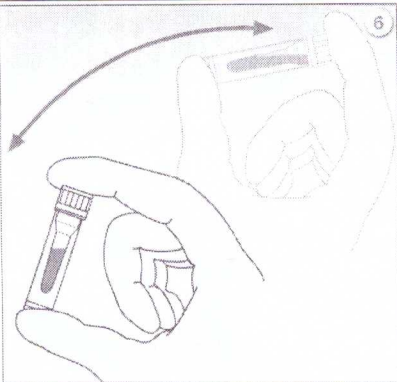
All patient blood specimens should be treated with standard precautions.

Wear gloves!

SARSTEDT AG & Co.
P.O. Box 12 20
D-51582 Nümbrecht
Phone +49 2293 3050
Fax +49 2293 305-122
info@sarstedt.com
www.sarstedt.com

Microvette® 100/200

Naudotojo vadovas

	<p>1. Kraują surinkite į pritvirtintą 100µl ar 200µl kapiliarą. Geriausią rezultatą pasieksite, jei Microvette® laikysite horizontaliai ar šiek tiek nuožulniai.</p>
	<p>2. Kraujo paėmimas yra baigtas, kai kapiliaras yra pilnai užpildytas krauju.</p>
 	<p>3. Užpildytą mėgintuvėlį laikykite vertikaliai, kad kraujas iš kapiliaro pilnai subėgtų į Microvette®.</p> <p>4. Atsukite kamštelį su kapiliaru ir išmeskite kaip vieną vienetą.</p>
 	<p>5. Nuo mėgintuvėlio apačios nuimkite kamštelį ir uždėkite ant Microvette® (pasigirs spragtelėjimas).</p> <p>6. Mėginį sumaišykite švelniai pavartydami Microvette®.</p> <p>Su visais pacientų kraujo mėginiais būtina elgtis laikantis standartinių procedūrų. Visada dėvėkite pirštines!</p>

Tikslus dokumento vertimas į lietuvių kalbą

Vertėja Akvilė Gegelevičienė

Data 2017-01-10

UAB Diamedica
Molėtų pl. 73, Vilnius, Lietuva
Tel. 8 5 279 0080

/logotipas/

Blood Collection and
Diagnostic Products

Capillary blood collection systems - As individual as your patients

Blood Collection and
Diagnostic Products

Microvette® 100/200 –
Capillary blood collection

The Microvette® capillary blood collection system is designed to offer practical solutions for individual requirements. Choose between the Microvette® 100 and 200 with a conical or round bottom inner tube. For both versions the End-to-End capillary is preassembled and ready for use.

The Microvette® offers all the advantages of a modern capillary blood collection system:

- Assembled capillary for blood collection according to the End-to-End principle
- Special twist cap design is easy to open and minimizes aerosol effect
- Optimized tube geometry ensures thorough sample mixing
- Colour coded caps and print for easy identification of additives and volume
- Shelf life and batch number on each tube
- Can also be used without capillary for collection along tube rim.



Blood collection with assembled 100 µl or 200 µl End-to-End capillary



Assembled End-to-End capillary and graduation

Shelf life and batch number on each tube

Microvette® 100
100 µl sample volume, conical inner tube

Preparation	Order Number
Serum / Clotting activator	20.1280
Plasma / Lithium Heparin	20.1282

100 µl sample volume, round bottom inner tube

Preparation	Order Number
Haematology / Potassium EDTA	20.1278

Microvettes 100 are packaged in units of 100/box (1,000/case).

Microvette® 200
200 µl sample volume, conical inner tube

Preparation	Order Number
Serum / Clotting activator	20.1290
Plasma / Lithium Heparin	20.1292
Glucose / Fluoride	20.1289

200 µl sample volume, round bottom inner tube

Preparation	Order Number
Serum gel / Clotting activator	20.1291
Haematology / Potassium EDTA	20.1288

Microvettes 200 are packaged in units of 100/box (1,000/case).

poz. 124

Microvette® 300/500 –
Blood collection with
collection rim

The Microvette® tubes are ideal for the collection of blood using the gravity-flow principle of collection. Any part of the entire rim can be used. The special conical design of the Microvette® 300's inner tube enables thorough mixing, even with small sample volumes.

The Microvette® offers all the advantages of a modern blood collection system:

- Choice of different inner tube designs with 300 or 500 µl volume capacity and corresponding graduation
- Special twist cap design is easy to open and minimizes aerosol effect
- Cylindrical outer container is ideal for barcode or patient labels
- Shelf life and batch number on each tube



Simple peripheral blood collection thanks to special collection vessel



Sample volume 300 µl or 500 µl

Shelf life and batch number on each tube

Microvette® 300
300 µl sample volume, conical inner tube

Preparation	Order Number
Serum / Clotting activator	20.1308
Plasma / Lithium Heparin	20.1309
Glucose / Fluoride	20.1307

Microvette® 500
500 µl sample volume, round bottom inner tube

Preparation	Order Number
Serum / Clotting activator	20.1343
Serum gel / Clotting activator	20.1344
Plasma / Lithium Heparin	20.1345
Plasma / Lithium Heparin Gel	20.1346
Haematology / Potassium EDTA	20.1341

Microvettes 300/500 are packaged in units of 100/box (1,000/case)

Accessories

Description	Length/ø mm	Order Number
Carrier tube for Microvette®, transparent	75/13	55.525.003
Carrier tube for Microvette®, brown	75/13	55.525.002